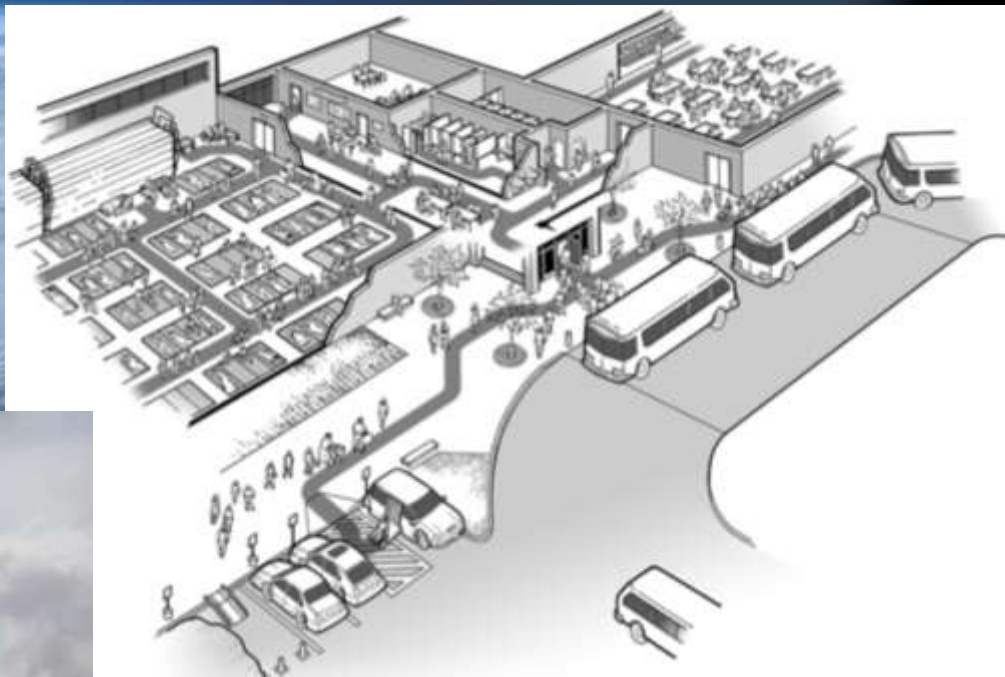
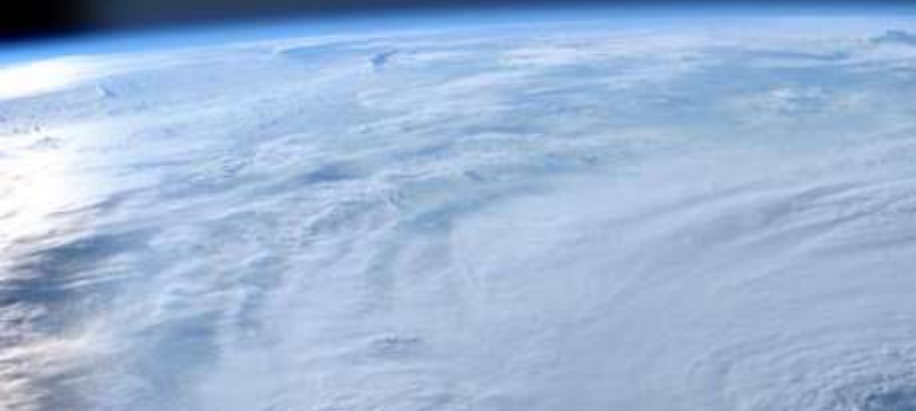


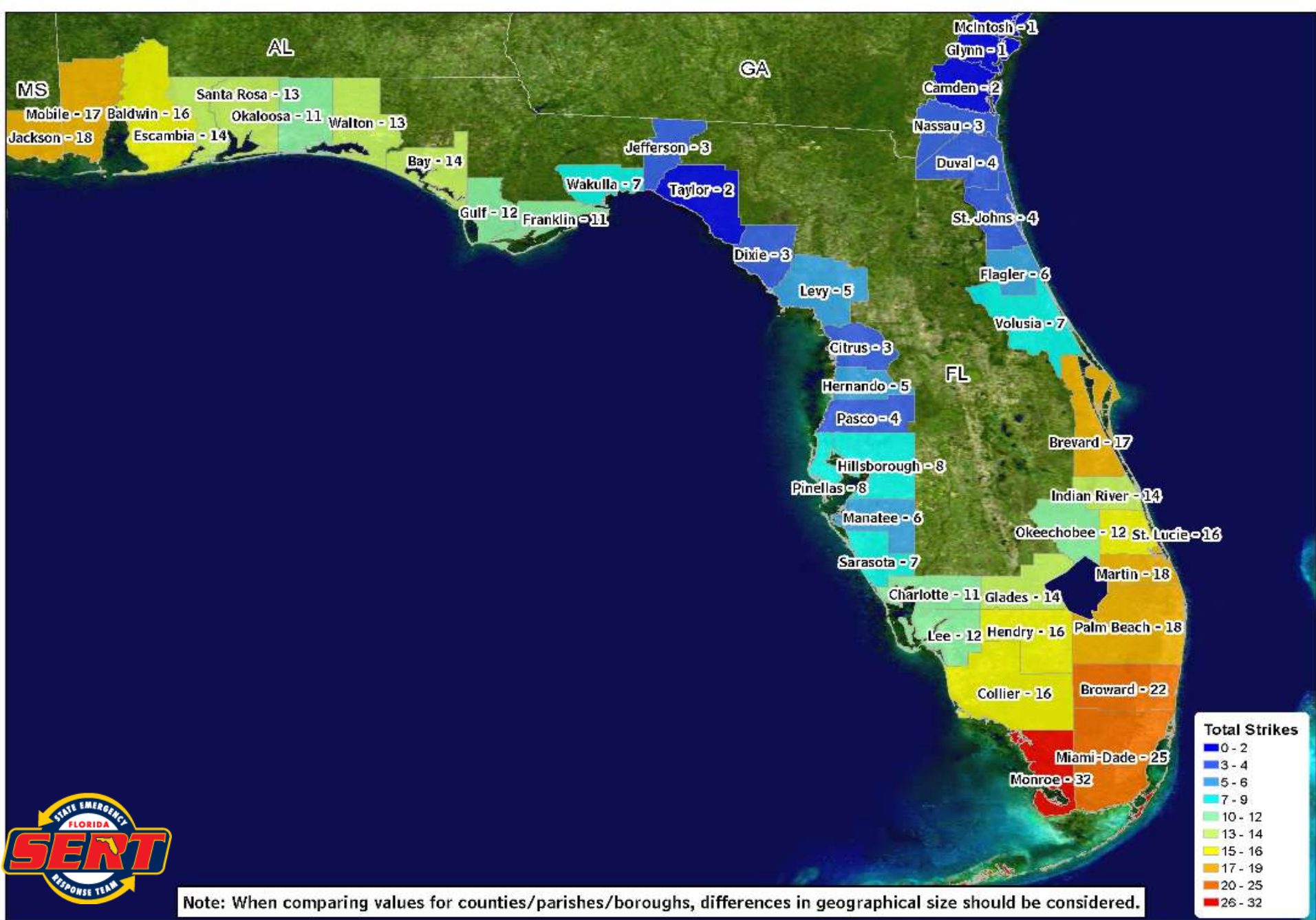
PREPARING FOR THE 2012 HURRICANE SEASON



Hurricane Season 2012

June 1 – November 30





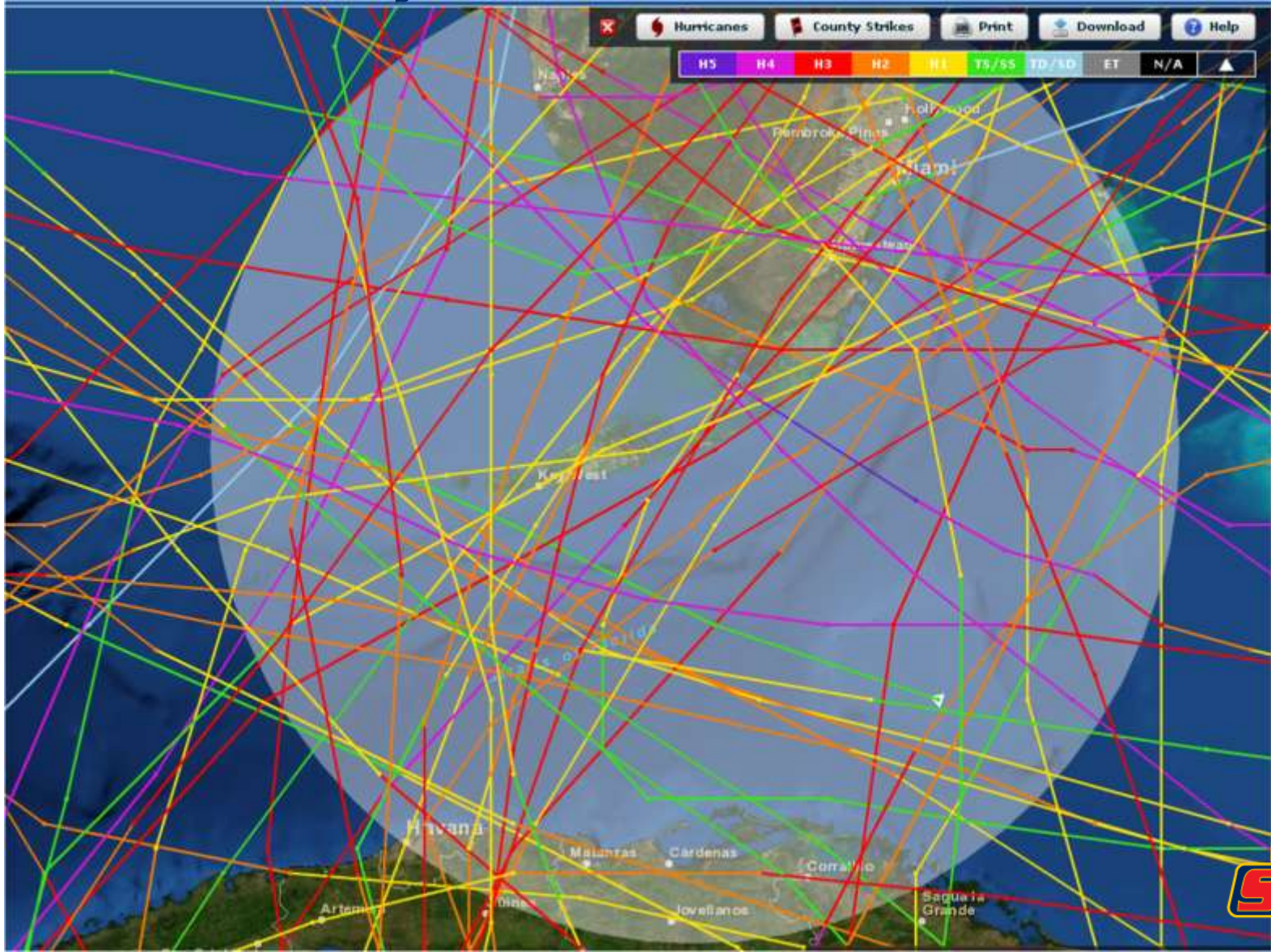
Note: When comparing values for counties/parishes/boroughs, differences in geographical size should be considered.



Total number of hurricane strikes by counties/parishes/boroughs, 1900-2010

Data from NWS NHC 46: Hurricane Experience Levels of Coastal County Populations from Texas to Maine. Jerry D. Jarrell, Paul J. Hebert, and Max Mayfield. August, 1992, with updates.

64 Hurricanes within 150 miles of Florida Keys between 1850-2011



1935 – The Labor Day Hurricane

From Tropical Storm to
Category 5 in less than 24
hours...



October 1909 – Category 3

NO. 3. AFTER THE HURRICANE, OCT. 10, 09. PIGEON KEY.



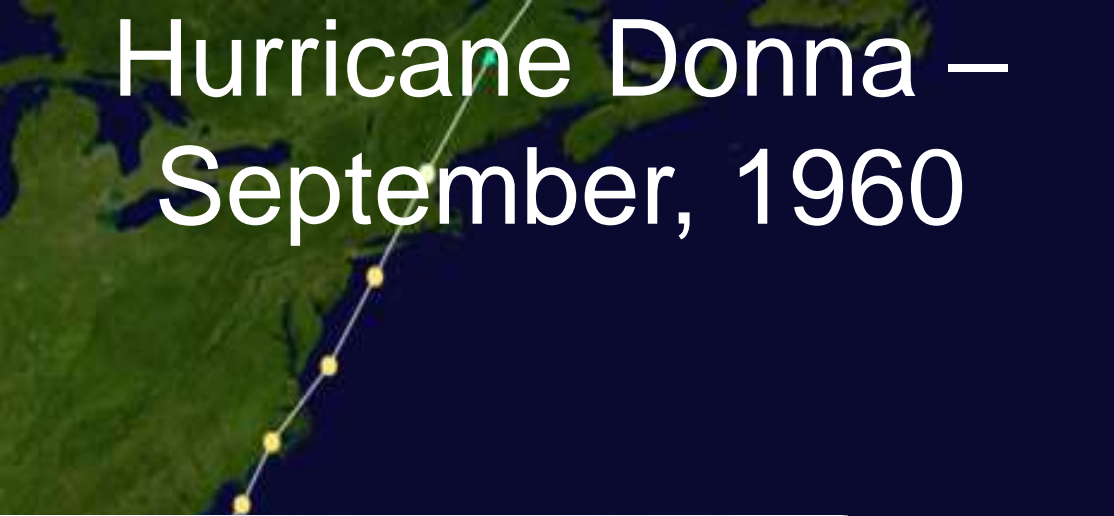
Pub. by N.M. Huber.



10-11-1909 at Simonton and Greene Streets in Key West.



Hurricane Donna – September, 1960



Wilma – October 24, 2005

500 AM EDT

Hurricane Force Winds continue

Ocean-side (south side) flooding in Marathon

Inundation 2 to 3 feet above ground throughout the first street block of the Lower Keys



Wilma – October 24, 2005

1100 AM EDT

**Waters begin to recede
in Key West...**

**...but severe flooding
from the north shore is
occurring 50 miles up
the road in Marathon**



4 Rules Not to Live By...

...in the Florida Keys

- “The storm surge flooding is worst when the winds and weather are the worst .”
- “The coral reef protects us from damaging storm surge.”
- “Storm surge only comes from the ocean side!”
- “**DAMAGING** storm surge only comes from the bay side!”



The Intensity of the Hurricane is NOT the Only Factor that Determines Storm Surge Height

Old Saffir-Simpson Hurricane Scale

Category	Central Pressure		Winds (mph)	Surge	Damage
	Millibars	Inches			
5	< 920	< 27.17	>155	>18'	Catastrophic
4	944-920	27.88-27.17	131-155	13'-18'	Extreme
3	964-945	28.47-27.91	111-130	9'-12'	Extensive
2	979-965	27.91-28.50	96-110	6'-8'	Moderate
1	≤ 980	≤ 28.94	74-95	4'-5'	Minimal

- ← Katrina (3)
- ← Ike (2)
- ← Rita & Ivan (3)
- ← Gustav (2)
- ← Lili (1)

<http://www.nhc.noaa.gov/aboutsshs.shtml>



The depth of water increases **QUICKLY** south of the Reef.

The depth of water increases **SLOWLY** north of the Keys and through Florida Bay.

All other things being equal, cyclones that pass north of the Keys **AND** moving northeast or east will deliver a higher surge.



Evacuation Information

Monroe County Florida



[About Monroe County](#)

[Divisions](#)

[Residents](#)

[Visitors](#)

[Business](#)

[Services](#)

Search

GO

[Share](#) [Print](#) [Email](#) [RSS](#)

[Home](#) > [Divisions](#) > [Emergency Services](#) > Emergency Management

Emergency Management



[MONROE COUNTY INFORMATION HOTLINE](#)

1-800-955-5504

Monroe County Emergency Management provides planning and preparedness for, and coordination of, response activities for events that threaten the health and safety of Monroe County residents and visitors and that may damage property and affect the economy within the county.

QuickLinks

[Homeland Security](#)

[American Red Cross](#)

[Disability Rights Florida](#)

[Floodplain Management](#)

[Florida Division of](#)

[Emergency Management](#)

[Miami Dade Evacuation](#)

[Brief](#)

[Storm Surge & Coastal](#)

[Floods](#)

[The Saffir-Simpson](#)

[Hurricane Wind Scale](#)

View All

[Newsletter](#)

[Notify Me](#)

[Report a Concern](#)

[Emergency Alerts](#)





- Zone 1:** MM 0 to MM 6
- Zone 2:** MM 6 to MM 40
- Zone 3:** MM 40 to MM 63
- Zone 4:** MM 63 to 3-way stop at CR 905-A
- Zone 5:** CR 905-A to mainland Monroe County including Ocean Reef



Your
Emergency
Supply Kit
Checklist



**GET
READY
NOW!**



FLORIDA KEYS
EVACUATION
UNDERWAY





FloridaEvacuates.com

[Home](#) [Shelter Information](#) [Preparedness Videos](#) [Mobile App](#) [Links](#) [Help](#)

Please note: Only shelters which are currently open will show up in searches. Statuses are handled by the American Red Cross.

Enter your location to find currently open shelters:

Search

Use GPS



Shelters Locator

Locate a nearby emergency shelter by zip code and address. This tool may be used for planning and during an evacuation order.



Florida 511

Real-time traffic information, travel times, congestion, construction, severe weather and emergency evacuation information.



National Weather Service

View the latest satellite and radar images from the National Weather Service



Shelters Information

Answers to: Should I Stay or Should I Go? What to take and not take? What is an evacuation zone?



Web Links

Links to other information from sources such as the FEMA and the National Weather Service, and Kids Get A Plan



Preparedness Videos

Learn how to be prepared in the event of an emergency from hardware store owner Dorothy James





Evacuations for Monroe County PRIOR TO LANDFALL

- **48 Hours**
 - Tourists and Visitors
- **36 Hours**
 - Mobile Home Populations
 - Special Needs
 - Hospitals and Nursing Homes
- **24 Hours**
 - General Population



GET A PLAN!
FloridaDisaster.org

FLORIDADISASTER.org

Florida Division of Emergency Management



Get A Family Plan



Get A Business Plan



Strengthen Your Home



Kids Get a Plan



Disability Disaster Information



Visit the Division's Homepage



www.KidsGetAPlan.com



Please tell us your grade level and Zip Code and click the "Let's Go" button to begin.



Grade	Zip Code	
Kindergarten <input type="button" value="v"/>	<input type="text"/>	



Or click on any of the buttons below.

K-5

6th grade +

Disaster Supplies List

- Water - at least one gallon daily per person for 3 to 7 days
- Food - at least enough for 3 to 7 days
 - non-perishable packaged or canned food/juices
 - foods for infants or the elderly
 - snack foods
 - non-electric can opener
 - cooking tools, fuel, matches
 - paper plates/plastic utensils
- Blankets, pillows, etc.
- Clothing - seasonal/rain gear, sturdy shoes
- First Aid Kit, medicines, prescription drugs
- Special Items - for babies and the elderly
- Toiletries - hygiene items
- Moisture wipes
- Flashlights, batteries
- Radio - Battery operated and NOAA All-Hazards Weather Radio
- Cash - Banks and ATMs may not be open or available for extended periods
- Keys
- Toys, books and games
- Important documents - in a waterproof container
 - Insurance, medical records, bank account numbers, Social Security card, etc.
 - Document all valuables with videotape if possible
- Tools - keep a set with you during the storm
- Vehicle fuel tanks filled
- Pet care items
 - proper identification and immunization records
 - ample supply of food and water
 - a carrier or cage
 - medications
 - muzzle and leash







VULNERABLE INFRASTRUCTURE

- BRIDGES AND ROADWAYS
- POWER LINES
- TELEPHONE COMMUNICATIONS AND CELL TOWER OVERLOADS
- WATER LINES



Florida Pet Friendly Emergency Shelters

Miami-Dade County

Darwin Fuchs Pavilion at the **Miami-Dade County Fair & Exposition** 10901 SW 24th Street .
Pre-registration required

Dr. Michael M. Krop Senior High School, 1410 NE 215th Street, Aventura Pre-registration required

Pet friendly accommodations - reserve early:

Baymont Inn, Cutler Ridge 305-278-0001
Best Western Floridian, Cutler Ridge 305-253-9960
Hampton Inn, Florida City, 305-247-8833
Days Inn Miami Lakes, Hialeah, 305-823-2121
Ramada Inn Miami Airport , 305-823-2000
Days Inn, Homestead, 305-245-1260
Fountainebleau Hilton Resort, Miami Beach , 305-538-2000
Loews, Miami Beach, 305-604-1601
Marriott South Beach, 305-536-7700
The Tides, Miami Beach, 305-604-5070
La Quinta, Miami, 305-599-9902

Monroe County (Florida Keys)

For Category 1 and 2 hurricanes there will be Pet Friendly Shelters open throughout Monroe County. People with special needs may request transportation to shelters allowing pets. **Registraion Form.** **Shelters will not open for category 3,4, or 5 storms - you must evacuate to the mainland.**

Key West High School, Key West

Poinciana School, Key West

Sugarloaf School. Sugarloaf Key, MM19

Stanley Switlik School, Marathon, MM48

Hotels that will accept pets during a disaster:

Sands of Islamorada, US 1 Mile Marker 80, 305-664-2791
Howard Johnson, Key Largo, US 1 Mile Marker 102, 305-451-1400
The Palms Motel, Key West, 305-294-3146

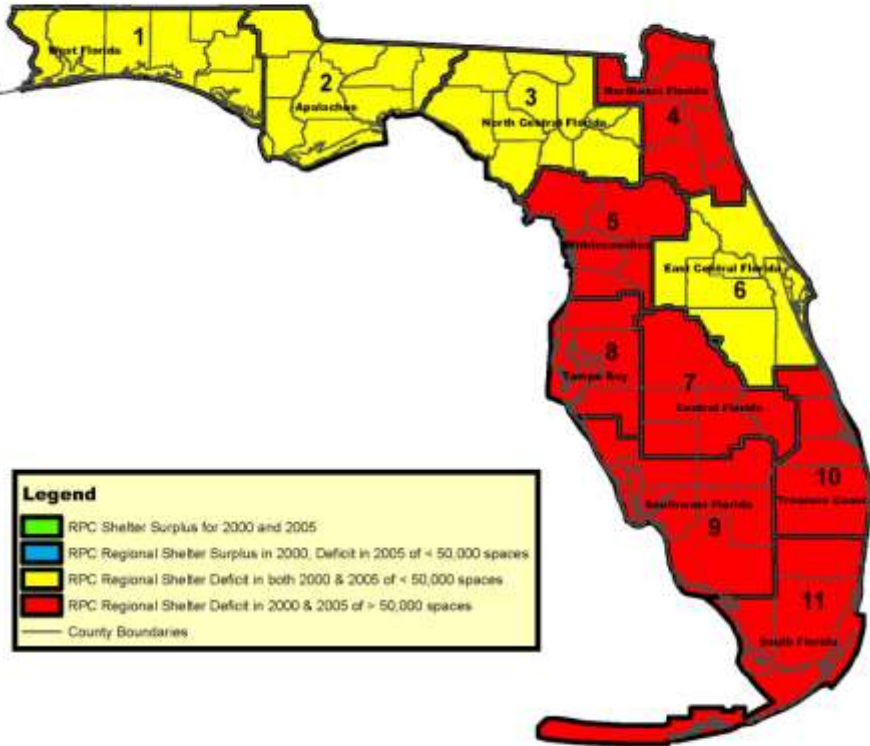


2012 STATEWIDE EMERGENCY SHELTER PLAN

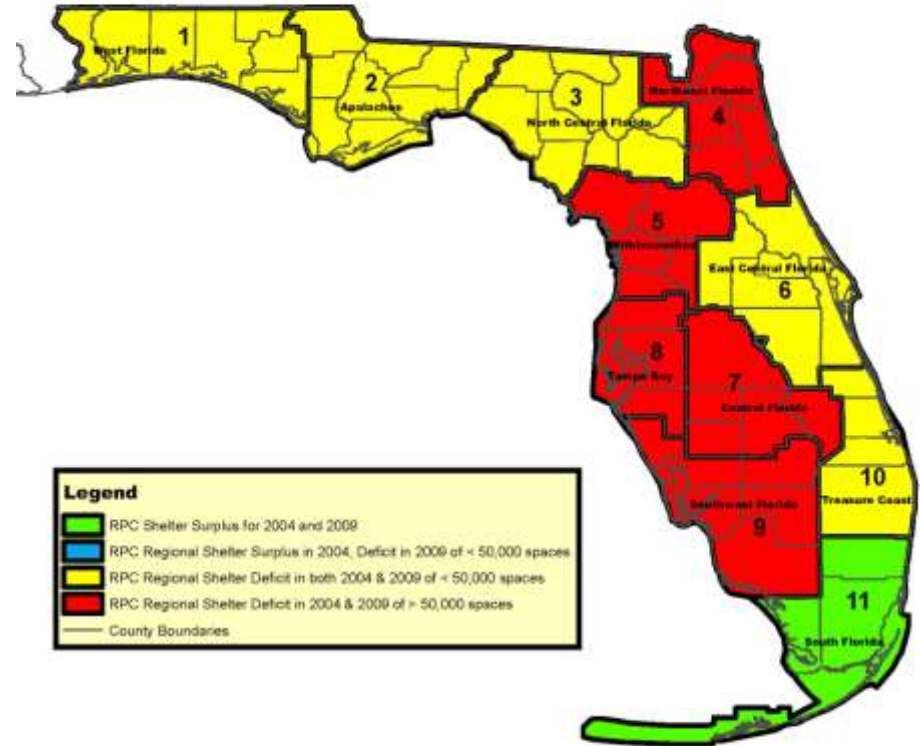


GENERAL POPULATION AND SPECIAL NEEDS SHELTER DEFICITS

Regional General Population and Special Needs Shelter Deficit 2000

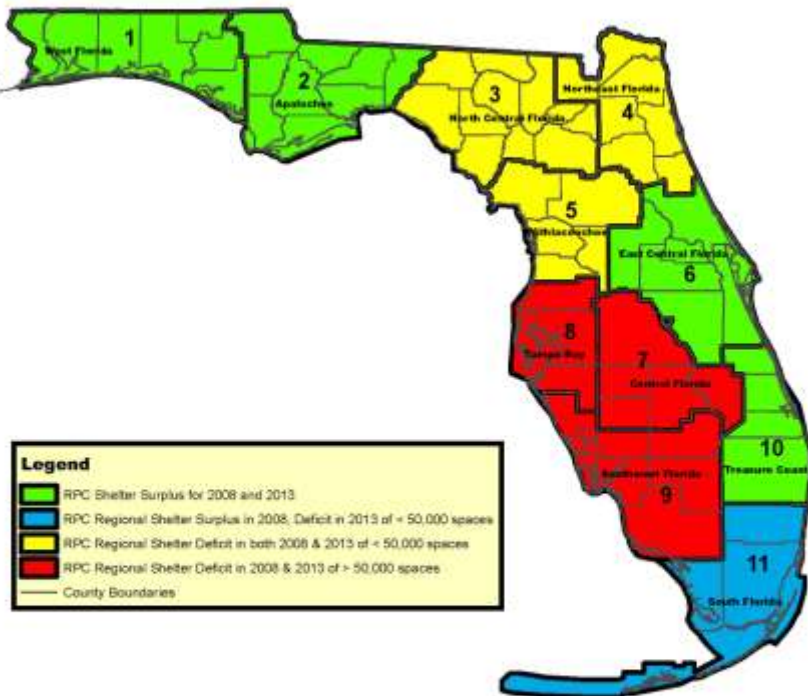


Regional General Population and Special Needs Shelter Deficit 2004

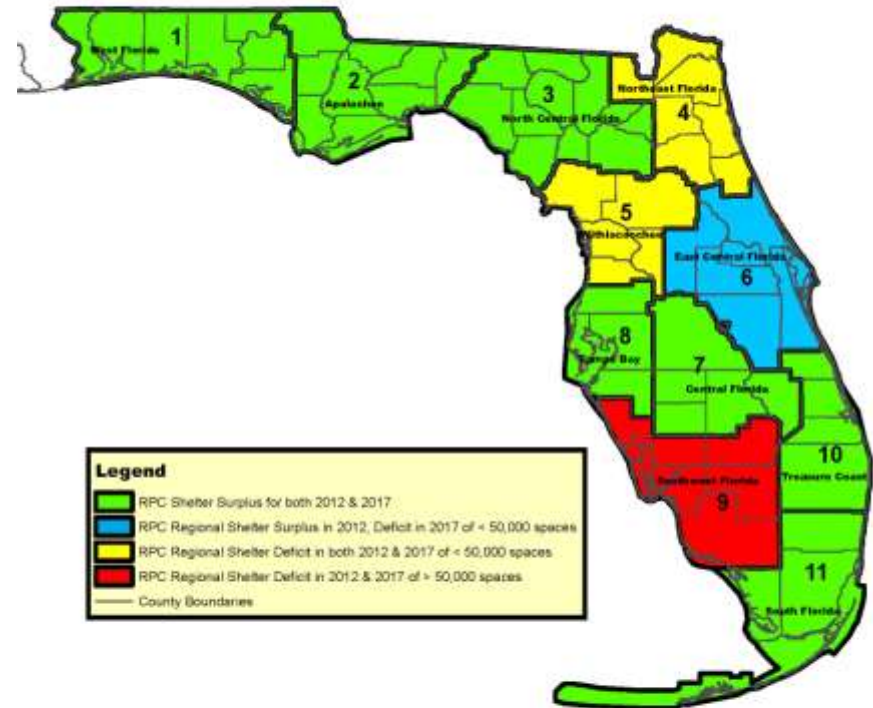


GENERAL POPULATION SHELTER DEFICIT

**Regional General Population Shelter Deficit
2008**

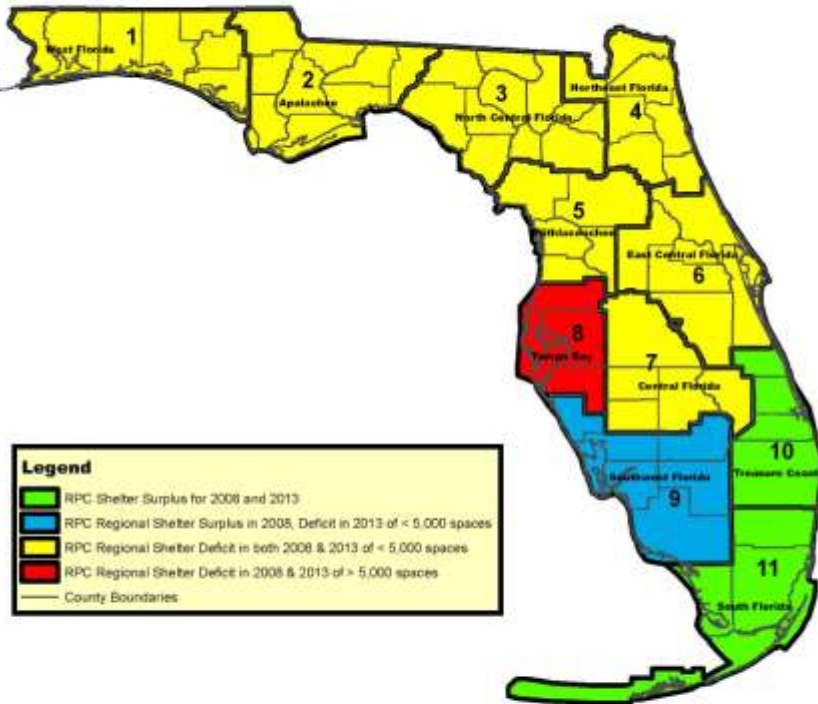


**Regional General Population Shelter Deficit
2012**



SPECIAL NEEDS POPULATION SHELTER DEFICIT

**Regional Special Needs Population Shelter Deficit
2008**



**Regional Special Needs Population Shelter Deficit
2012**

